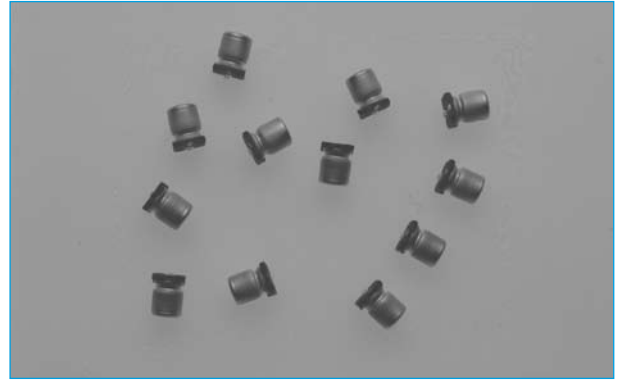


**SURFACE MOUNT**

**HIGH VOLTAGE SMD ELECTROLYTIC - 105 °C DVJRHV**

- Cylindrical leadless type for surface mount
- Long life (2000 hours at +105 °C)
- High voltage (200 and 400Vdc)
- Compatible with reflow soldering



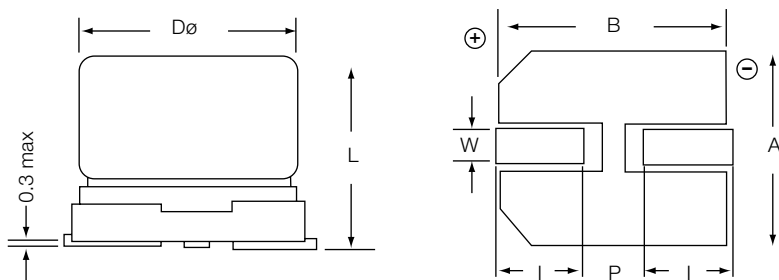
**SPECIFICATION**

Rated Voltage Range:		200Vdc	400Vdc
Rated Capacitance Range:		4.7 ~ 33 $\mu$ F	3.3 ~ 10 $\mu$ F
Operating Temperature Range:		-40 °C ~ +105 °C	
Capacitance Tolerance:		±20%	
Max. Leakage Current after 2 minutes:		0.03CV + 15 $\mu$ F	
Max. Tan $\delta$ :		0.20	0.25
Low temperature Stability (Impedance Ratio @ 120Hz):	Z:25 °C/+20 °C	3	6
High Temperature Load Life 2000 hours at +105 °C Rated WVDC:	Capacitance Change	Within ±25% of initial value	
	Tan $\delta$	Less than 200% of specified value	
	Leakage Current	Less than the specified value	

**RANGE**

Order Code	Cap $\mu$ F	Case Size	WV (Vdc)	Max Tan $\delta$	LC Max $\mu$ F	ESR Max @+20 °C & 120Hz(mA)	Max Ripple Current @+105 °C & 120Hz (mA)
DVRHV4.7200	4.7	10x10.5	200	0.20	43	70.5	64
DVRHV10200	10	10x10.5	200	0.20	65	33.1	64
DVRHV22200	22	12.5x14	200	0.20	113	15.1	112
DVRHV33200	33	12.5x14	200	0.20	157	10.0	112
DVRHV3.3400	3.3	10x10.5	400	0.25	51	126.0	36
DVRHV4.7400	4.7	10x10.5	400	0.25	63	88.1	36
DVRHV6.8400	6.8	12.5x14	400	0.25	80	61.0	47
DVRHV10400	10	12.5x14	400	0.25	105	41.5	47

**OUTLINE DRAWING**



Case Size	D±0.5	L max.	A±0.2	B±0.2	I±0.2	W	P±0.2	Q'ty per reel
10x10.5	10.0	10.5	10.3	10.3	3.2	0.7-1.0	4.6	300pcs
12.5x14	12.5	14.0	12.8	12.8	4.4	0.7-1.0	4.6	200pcs

Dimensions in mm

**ORDERING INFORMATION**

<b>DVJRHV</b>	<b>4.7</b>	<b>200</b>	<b>LF</b>
Range	Capacitance $\mu$ F	Voltage	Lead Free