

## CAPACITORS

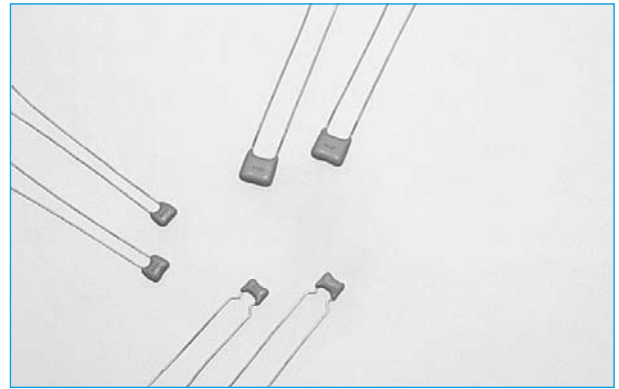
## CERAMIC MULTI-LAYER RADIAL DR

SECTION 1

- NPO, X7R & Z5U dielectric
- 10pF - 1μF
- 50/63V, 100V & 200V
- Enhanced environmental protection coating
- 50V, 100V rated voltage
- Variety of lead configuration

The DR multi-layer ceramic offers small size in a wide range of formats, including 2.54mm & 5mm pitch, loose & taped packaging.

Small value close-tolerance parts are suitable for radio and instrumentation circuits. The range also extends to high-capacity decoupling values.

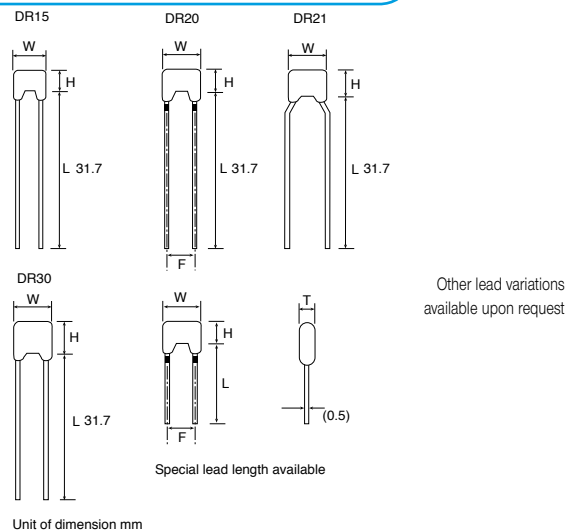


**Temperature** -55 to 125°C (-25 to +85°C for Y5V)  
**Temperature Coefficient** NPO: Zero ± 30ppm/°C  
 X7R: ± 15% max Z5U: +22%, -56%

### SIZE CODE & CAPACITANCE (pF) AVAIL.

Size Code	WVDC	COG	X7R	Z5U
DR 15	63V	10-560	270-18000	10000-47000
	100V	10-390	270-10000	680-10000
DR 20/21	63V	-	1000 - 100000	10000-470000
	100V	10-4700	1000 - 100000	-
DR 30	63V	-	100000-330000	470000-1000000
	100V	4700-10000	-	-
DR30X	63V	-	470000-1000000	-

### OUTLINE DRAWING



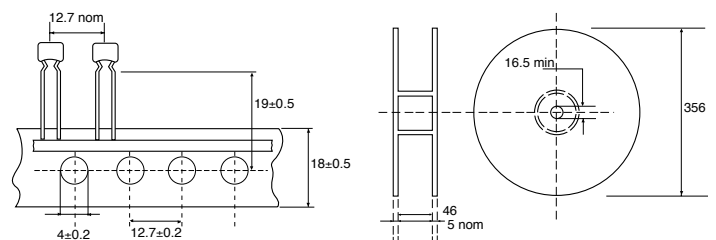
### SIZE CODE & DIMENSIONS

Size Code	Width W Max	Height H Max	Thickness T Max	Lead Spacing F
DR 15	3.81	3.81	3.18	2.54 ± 1.0
DR 20	5.08	5.08	3.18	2.54 ± 1.0
DR 21	5.08	5.08	3.18	5.08 ± 1.0
DR 30	7.62	7.62	3.81	5.08 ± 1.0

### PACKING QUANTITY

Style	Lead Spacing	Taped Components	
		Qty per Heel	Qty per Box
DR 15	2.54	3000	3000
DR 20	2.54	3000	3000
DR 21	5.08	3000	3000
DR 30	5.08	2500/2000	2500

### TAPING, REEL & BOX DIMENSIONS (mm)



### ORDERING INFORMATION

DR	U	21	C	102	J	B	TA
Range	Voltage	Size code	Dielectric	Value	Tol	Pitch	Taping
	U = 50 A = 100 F = 200 E = 25 C = 16		C = COG R = X7R W = Z5U	102 = 1000PF	C = 0.25PF D = 0.50PF J = 5.0% K = 10% M = 20% Z = 20% + 80%	A = 2.54 B = 5.08	TA = Tape Ammo TR = Tape Reel Blank = Loose

