



TERMINAL BLOCKS

- 7.5mm Pitch
- Flame Retardant Material
- 2.5mm² wire acceptance
- UL/ CSA approved
- Interlocking
- Screw Terminal

7.5mm PITCH 90° MOUNT

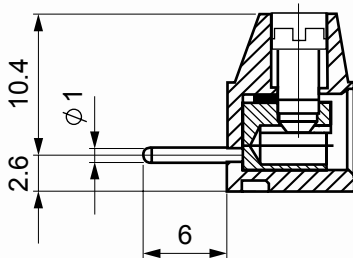


SPECIFICATION

Rating: 17.5A/750V
Dielectric Strength: ≥3KV/60sec
Insulation Resistance: ≥5MΩ
Working temperature: -20°C to 125°C
Short Period: 160°
Moulding: UL94V-0 flame retardant Lexan

Pin/terminal: 5μ tinned, nickel plated brass
Wire protector: Nickel plated brass
Screw/torque: M3 steel, 6μ zinc colour passivated and tropicalised/0.5Nm
Recommended PCB hole size: ø1.1mm

OUTLINE DRAWING



ORDERING INFORMATION

DBC	TB	87	/2
Dubilier Connectors	Series Terminal Block	Style	N° of Ways 2 = 2 ways 3 = 3 ways

* Other Number of ways are available up to 12
Please consult office for further details

TERMINAL BLOCKS

- 7.5mm Pitch
- Screw Terminal
- 2 - 12 pole interlocking
- 2.5mm² wire acceptance
- UL/CE approved

7.5MM PITCH SCREW TERMINAL



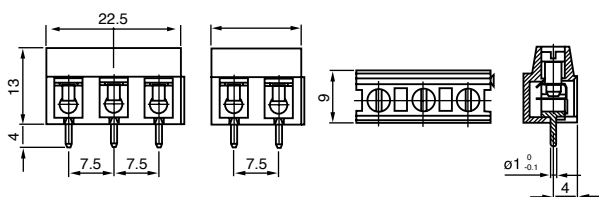
SPECIFICATION

Electrical Characteristics

Rating Current: 17.5A/750V
Dielectric strength ≥ 3kV/60sec
Insulation resistance ≥ 5MΩ
Operating Temperature: -20°C to +125°C
Short period: 160°C
Moulding: UL94-V0 flame retardant Lexan

Pin/terminal: 5μ tinned, nickel plated brass
Wire protector: Nickel plated brass
Screw/torque: M3 steel. 6μ zinc colour passivated and tropicalised/0.5Nm
Recommended PCB hole size: ø1.1mm

OUTLINE DRAWING



ORDERING INFORMATION

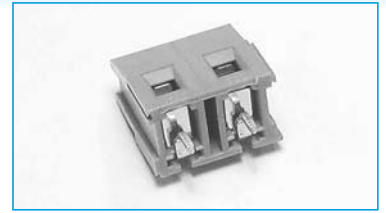
DBC	TB	24	/2
Dubilier Connectors	Series Terminal Blocks	Style	No of Ways 2 = 2ways 3 = 3ways

* other number of ways are available
Please consult the office for further details

TERMINAL BLOCKS

- 7.5mm Pitch
- Rising Clamp Terminal
- 2 - 12 pole interlocking
- 2.5mm² wire acceptance
- UL/CE/VDE approved
- Colour green

7.5MM PITCH 18 POLE RISING CLAMP



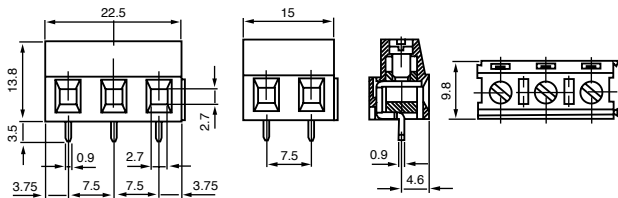
SPECIFICATION

Electrical Characteristics

Rating Current: 20A/750V
Dielectric Voltage: ≥ 3kV/60sec
Insulation Resistance: ≥ 5MΩ
Operating Temperature: -20°C to +125°C
Short Period: 160°C

Moulding: UL94-V0 flame retardant PA66
Pin/terminal: 5μ tinned, nickel plated brass
Wire clamp: Nickel plated brass
Screw/torque: M3 steel, 6μ zinc colour passivated and tropicalised/0.5Nm
Recommended PCB hole size: ø1.3mm

OUTLINE DRAWING



ORDERING INFORMATION

DBC	TB	33	/2
Dubilier Connectors	Series Terminal Blocks	Style	No of Ways
			2 = 2ways 3 = 3ways
* other number of ways are available Please consult the office for further details			

TERMINAL BLOCKS

- 7.5mm pitch
- Flame retardant material
- 2.5mm² wire acceptance
- Interlocking
- Professional rising clamp
- UL/ CSA approved



7.5mm PITCH 90° MOUNT

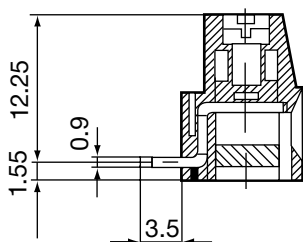


SPECIFICATION

Rating: 20A/750V
Dielectric Strength: ≥3KV/60sec
Insulation Resistance: ≥5MΩ
Working temperature: -20°C to 125°C
Short Period: 160°
Moulding: UL94V-0 flame retardant PA66
Pin/terminal: 5μ tinned, nickel plated brass

Wire clamp: Nickel plated brass
Screw/torque: M3 steel, 6 μ zinc colour passivated and tropicalised/0.5Nm
Recommended PCB hole size: ø1.3mm

OUTLINE DRAWING



ORDERING INFORMATION

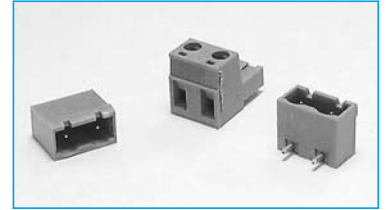
DBC	TB	88	/2
Dubilier Connectors	Series Terminal Block	Style	Nº of Ways
			2 = 2 ways 3 = 3 ways
* Other Number of ways are available up to 12 Please consult office for further details			



TERMINAL BLOCKS

7.5mm PITCH PLUG IN

- 2-12 pole solid block
- Closed and open headers
- Horizontal female plug style
- Professional rising clamp
- Moulded in green UL94-V0 flame retardant PA66
- 2.5mm² cable entry
- UL, CE approved



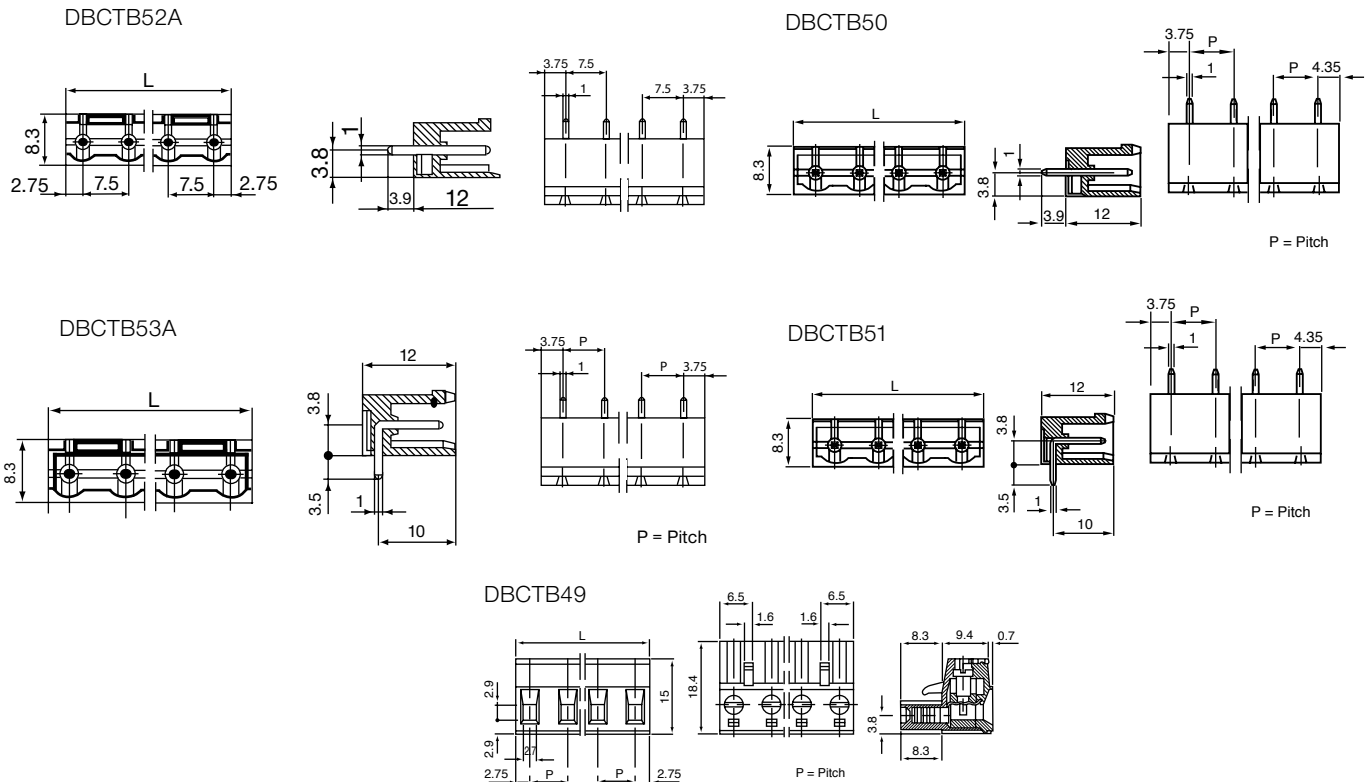
SPECIFICATION

Electrical Characteristics

Rating Current: 12A/750V
Dielectric Voltage: ≥ 3kVac/60sec
Insulation resistance: ≥ 5MΩ
Operating Temperature: -20°C to +125°C
Short Period: 160°C

Moulding: UL94-V0 flame retardant PA66
Pin/terminal: 5μ tinned phosphor bronze
Rising clamp: 5μ nickel copper flash brass
Screw/torque: M3 steel, 6μ zinc, colour passivated and tropicalised/0.5Nm
Recommended PCB hole size: ø1.4mm

OUTLINE DRAWING



ORDERING INFORMATION

DBC	TB	49	/2
Dubilier Connectors	Series Terminal Blocks	Style	No of Ways
		49 = Female	2 = 2ways
		50 = Closed End Str	3 = 3ways
		51 = Closed End R/A	etc.
		52A = Open End Str	* Other Number of ways are available up to 12
		53A = Open End R/A	Please consult office for further details