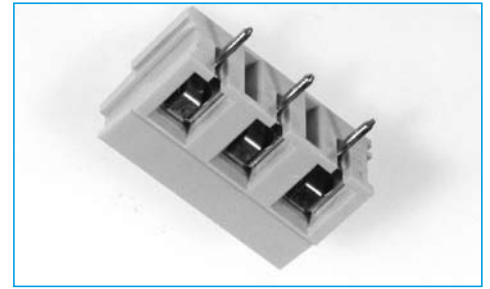


## TERMINAL BLOCKS

- 5.08mm pitch
- Professional rising clamp
- 1.5mm<sup>2</sup> wire acceptance
- Rating 17.5/50V
- Colour green
- UL/CE approved
- Interlocking

## 5.08mm PITCH VERTICAL MOUNT

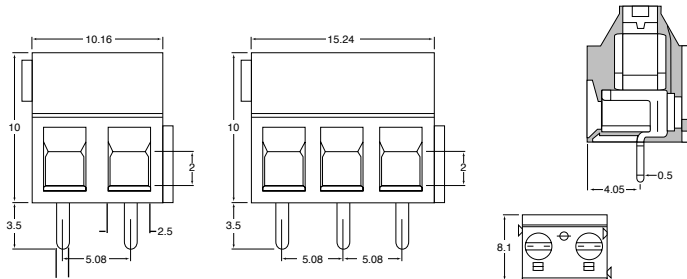


## SPECIFICATION

**Rating:** 17.5A/250 Volts  
**Dielectric Strength:** >2KV  
**Insulation Resistance:** >5MΩ  
**Working temperature:** -20°C to 125°C  
**Short Period:** 160°  
**Moulding:** UL94V-0 flame retardant nylon 66 (Green)

**Pin/terminal:** 5 micron tinned nickel plated brass  
**Rising clamp:** Nickel plated brass  
**Screw/torque:** M3 Zinc Steel/0.5Nm, colour passivated and tropicalised  
**Recommended PCB hole size:** ø1.3mm<sup>2</sup>

## OUTLINE DRAWING



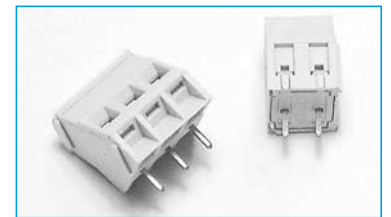
## ORDERING INFORMATION

DBC	TB	13	/2
Dubilier Connectors	Series Terminal Block	Style	Nº of Ways
			2 = 2 ways 3 = 3 ways
* Other Number of ways are available up to 12 Please consult office for further details			

## TERMINAL BLOCKS

- 5.08mm Pitch
- Rising Clamp Terminal
- 2 - 12 pole interlocking
- 2.5mm<sup>2</sup> wire acceptance
- UL/CE/VDE approved

## 5.08mm 45° PITCH RISING CLAMP

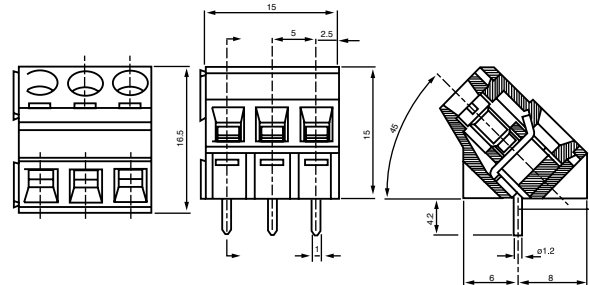


## SPECIFICATION

### Electrical Characteristics

**Rating Current:** 17.5/250V  
**Contact Resistance:** >125kV  
**Insulation Resistance:** ≥5mΩ  
**Operating Temperature:** -20°C to +125°C

## OUTLINE DRAWING



## ORDERING INFORMATION

DBC	TB	46	/2
Dubilier Connectors	Series Terminals Blocks	Style 46 = Style 46	No of Ways
			2 = 2ways 3 = 3ways
* other number of ways are available, Please consult the office for further details			

## TERMINAL BLOCKS

- 5.08mm pitch
- Professional rising clamp
- 4.00mm<sup>2</sup> wire acceptance
- Rating 24A / 450V
- CE approved
- Colour green
- Interlocking

## 5.08mm PITCH VERTICAL MOUNT

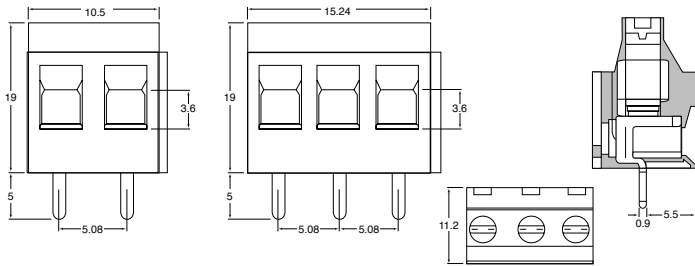


## SPECIFICATION

**Rating:** 24A/450V  
**Dielectric Strength:** >2.5KV  
**Insulation Resistance:** >5MΩ  
**Working temperature:** -20°C to 125°C  
**Short Period:** 160°  
**Moulding:** UL94V-0 flame retardant nylon 66(Green)

**Pin/terminal:** 5 micron tinned nickel plated brass  
**Rising clamp:** Nickel plated brass  
**Screw/torque:** M3 steel/0.5Nm 7 micron zinc colour passivated and tropicalised  
**Recommended PCB hole size:** ø1.3mm

## OUTLINE DRAWING



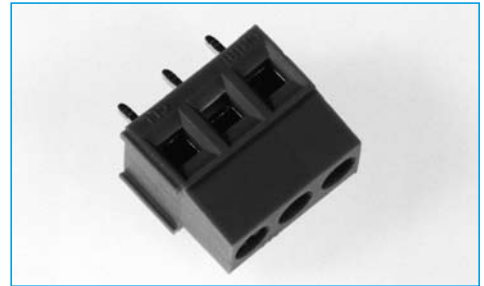
## ORDERING INFORMATION

DBC	TB	15	/2
Dubilier Connectors	Series Terminal Block	Style	N° of Ways
			2 = 2 ways 3 = 3 ways
* Other Number of ways are available up to 24 Please consult office for further details			

## TERMINAL BLOCKS

- 5.08mm pitch
- Professional rising clamp
- - Designed to prevent cable entry below clamp
- 2.5mm<sup>2</sup> wire acceptance
- UL/ CE approved
- Colour green
- Interlocking

## 5.08mm PITCH VERTICAL MOUNT

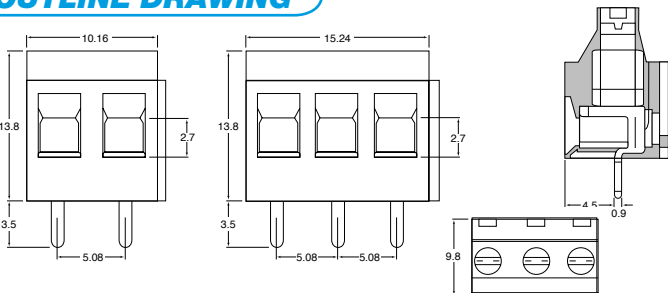


## SPECIFICATION

**Rating:** 20A/250V  
**Dielectric Strength:** 2.5kV  
**Insulation Resistance:** >5MΩ  
**Working temperature:** -20°C to 125°C  
**Moulding:** UL94V-0 Polyamide 68  
**Pin/terminal:** 5 micron tinned nickel plated brass

**Pin Terminal:** 5 micron tinned nickel plated brass  
**Rising clamp:** Nickel plated brass  
**Screw/torque:** M3 Zinc Steel, colour passivated and tropicalised/0.5NM  
**Recommended PCB hole size:** ø1.3mm<sup>2</sup>

## OUTLINE DRAWING



## ORDERING INFORMATION

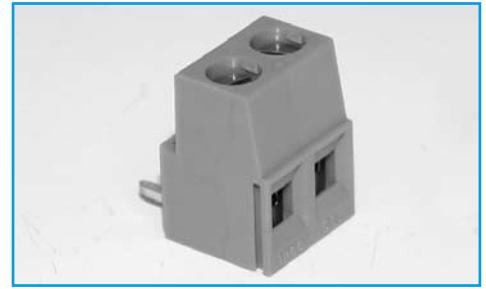
DBC	TB	17	/2
Dubilier Connectors	Series Terminal Block	Style	N° of Ways
			2 = 2 ways 3 = 3 ways



**TERMINAL BLOCKS**

- 5.08mm pitch
- Flame Retardant Material
- 2.5mm<sup>2</sup> wire acceptance
- UL/ CSA approved
- Interlocking
- Professional rising clamp

**5.08mm PITCH 90° MOUNT**

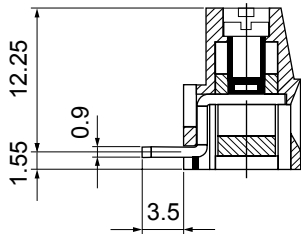


**SPECIFICATION**

**Rating:** 20A/250V  
**Dielectric Strength:** ≥2.5KV/60sec  
**Insulation Resistance:** ≥5MΩ  
**Working temperature:** -20°C to 125°C  
**Short Period:** 160°  
**Moulding:** UL94V-0 flame retardant PA66

**Pin/terminal:** 5μ tinned, nickel plated brass  
**Wire protector:** Nickel plated brass  
**Screw/torque:** M3 steel, 6μ zinc colour passivated and tropicalised/0.5Nm  
**Recommended PCB hole size:** ø1.3mm

**OUTLINE DRAWING**



**ORDERING INFORMATION**

DBC	TB	85	/2
Dubilier Connectors	Series Terminal Block	Style	N° of Ways
			2 = 2 ways
			3 = 3 ways

\* Other Number of ways are available up to 12  
 Please consult office for further details



## TERMINAL BLOCKS

## 5.08mm PITCH PLUG IN

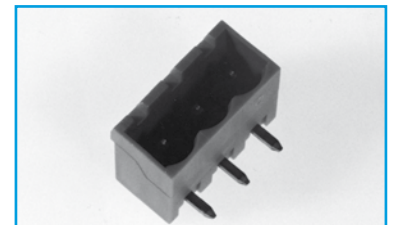
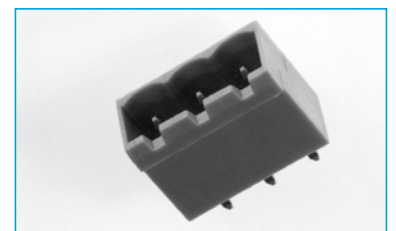
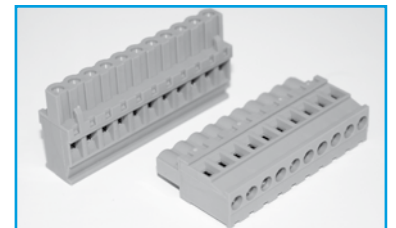
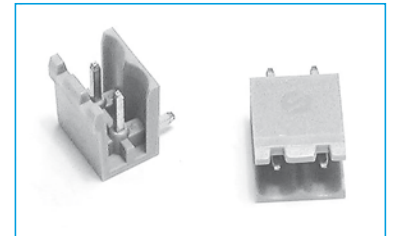
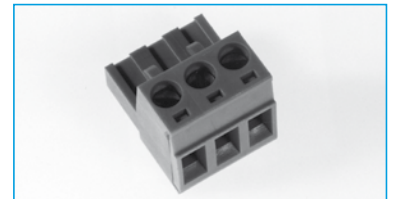
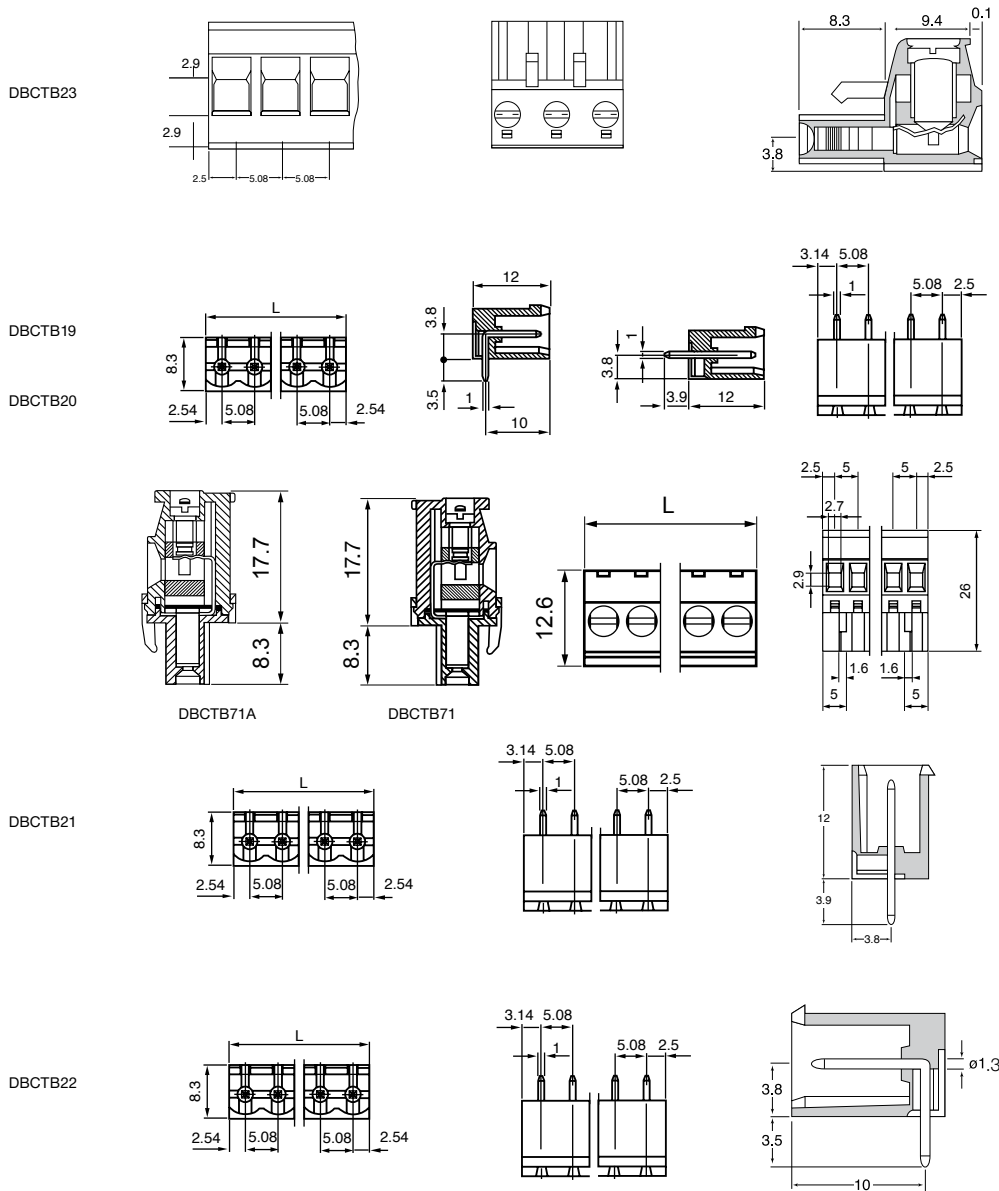
- 2-24 Pole 5.08mm pitch
- Colour green
- Horizontal and Vertical
- Open and closed headers
- Rating 12A
- UL/VDE/CE approved

### SPECIFICATION

**Rating:** 12A/380V  
**Dielectric Strength:** >2.5KV  
**Insulation Resistance:** >5MΩ  
**Working temperature:** -20°C to 125°C  
**Short Period:** 160°

**Moulding:** UL94V-0 flame retardant nylon 66  
**Pin/terminal:** 5 micron tinned nickel plated brass  
**Rising clamp:** 5 micron Nickel brass  
**Screw/torque:** M2 steel/0.5Nm 7 micron zinc colour passivated and tropicalised

### OUTLINE DRAWING



### ORDERING INFORMATION

DBC	TB	21	/2
Dubilier Connectors	Series Terminal Block	Style	N° of Ways
		19 = Open end straight	2 = 2 ways
		20 = Open end right angle	3 = 3 ways
		21 = Closed end straight	
		22 = Closed end right angle	
		23 = Female	
		71 = Standard vertical female	
		71A = Reversed vertical female	
			* Other Number of ways are available up to 24
			Please consult office for further details

SECTION 18