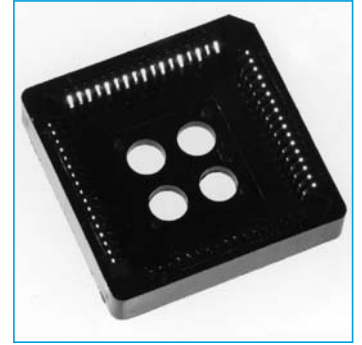
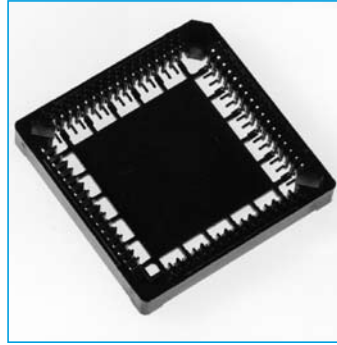


## IC SOCKETS

- Competitively priced products
- Low profile
- Through hole or surface mount
- 20, 28, 32, 44, 52, 68 and 84way
- Material - PBT and PPS

## PLCC



## SPECIFICATION

**Current Rating:** 1A  
**Contact Material:** Phosphor Bronze  
**Contact Plating:** Tin or Selective Plated

### Insulator Material:

- (1) 30% Glass Filled P.B.T. (UL94V-0) - Through hole
- (2) 40% Glass Filled P.P.S. (UL94V-0) - Surface Mount

**Dielectric Withstanding Voltage:** AC 600 V  
**Insulation Resistance:** 1000 MΩ min.  
**Contact Resistance:** 20 MΩ max.

### Operating Temperature:

-45 °C to +105 °C.

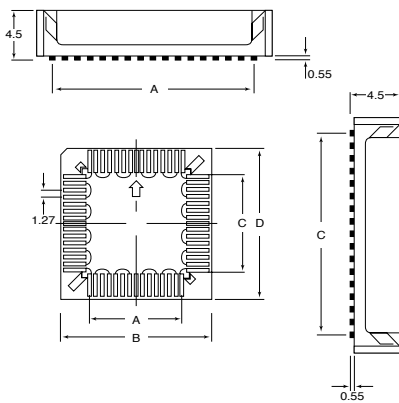
## SURFACE MOUNT

| No. of Contacts | A<br>±0.2 | B<br>±0.2 | C<br>±0.2 | D<br>±0.1 | E<br>±0.1 |
|-----------------|-----------|-----------|-----------|-----------|-----------|
| 20              | 5.08      | 15.64     | 5.08      | 15.64     | 12.72     |
| 28              | 7.62      | 18.82     | 1.62      | 18.28     | 15.27     |
| 32              | 7.62      | 18.82     | 10.16     | 20.82     | 17.80     |
| 44              | 12.70     | 23.28     | 12.70     | 23.28     | 20.32     |
| 52              | 15.24     | 25.84     | 15.24     | 25.84     | 22.90     |
| 68              | 20.32     | 30.94     | 20.32     | 30.94     | 27.94     |
| 84              | 25.40     | 36.04     | 25.40     | 36.40     | 33.06     |

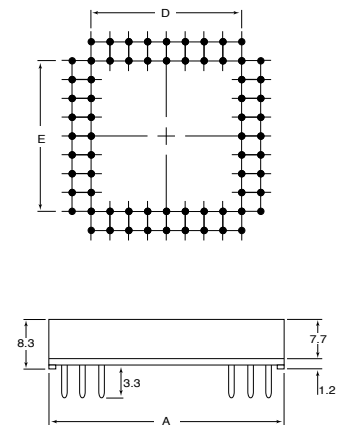
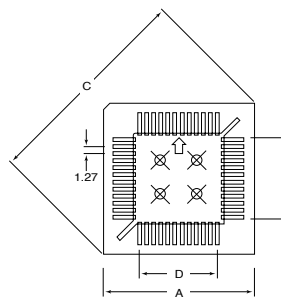
## THROUGH HOLE

| No. of Contacts | A<br>±0.2 | B<br>±0.2 | C<br>±0.2 | D<br>±0.1 | E<br>±0.1 |
|-----------------|-----------|-----------|-----------|-----------|-----------|
| 20              | 15.50     | 15.50     | 16.70     | 5.08      | 5.08      |
| 28              | 18.00     | 18.00     | 20.38     | 7.62      | 7.62      |
| 32              | 18.00     | 20.58     | 22.34     | 7.62      | 10.16     |
| 44              | 23.58     | 23.58     | 27.60     | 12.70     | 12.70     |
| 52              | 25.90     | 25.90     | 31.40     | 15.24     | 15.24     |
| 68              | 31.80     | 31.80     | 38.34     | 20.32     | 20.32     |
| 84              | 36.70     | 36.70     | 45.60     | 25.40     | 25.40     |

## OUTLINE DRAWING



**SURFACE MOUNT**



**THROUGH HOLE**

## ORDERING INFORMATION

| DBC                 | PLCC           | 20  | SMT  | TR                                     |
|---------------------|----------------|---|--|--|
| Dubilier Connectors | Series<br>PLCC | No. of Ways<br>20=20way<br>28=28way<br>32=32way<br>44=44way | Package Style<br>SMT=Surface Mount<br>Blank=Through Hole | Options<br>TR=Tape+Reel<br>Blank=Loose |