

## AUDIO

- 3 - 9 way available
- Unshielded, half shielded and full shielded available
- Competitively priced
- Industry Compatible
- Mates with DBCMD11 series
- PCB mounting

## PCB MINI JACK DIN SOCKETS



SECTION 6

## SPECIFICATION

### Contact resistance (DCR 0.1A):

1. Initial, before any testing:
  - (1) Pin to contact or (NC) 30mΩ
  - (2) Plug shield to socket or (NO) 50mΩ
2. After life test with mating plug:
  - (1) Pin to contact or (NC) 60mΩ
  - (2) Plug shield to socket or (NO) 100mΩ

**Insertion Force:** 0.5kg - 4.0kg Terminals withstand a 500g minimum pull for 10 seconds

**Extraction Force:** 0.5kg - 3.5kg before movement or breakage occurs

**Soldering Heat:** Terminal for PC board temperature: 260±5°C for 5 ± 1.0 seconds

**Operating temperature range:** -25°C to 100°C

**Insulating resistance:** More than 100MΩ by 500v DC at 90-95% RH, 40°C

**Voltage test:** Withstand 0.5mA 500v AC between any open terminal for one minute

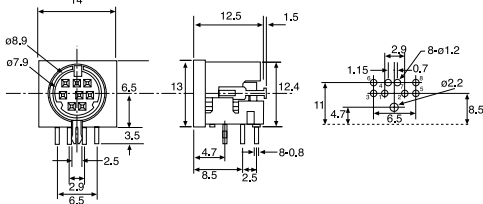
**Lifetime:** Withstand more than 5000 cycles insertion and withdrawal with testing plug

**Rated voltage:** 16vdc

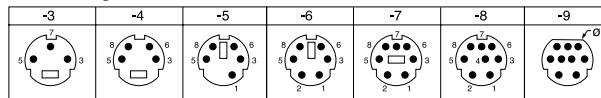
**Rated current:** 20mA - 0.3A

## OUTLINE DRAWING

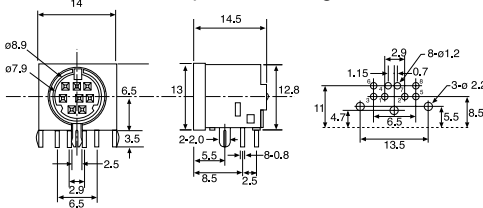
DBCMD0508 - Unshielded



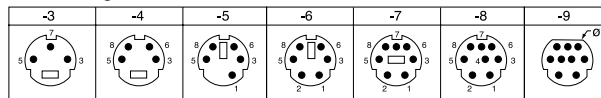
Pin Configuration



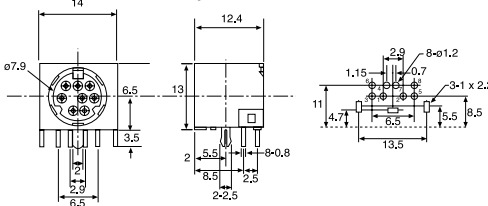
DBCMD0508A - Top, Left and Right Shielded



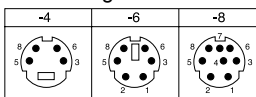
Pin Configuration



DBCMD0509 - Fully Shielded



Pin Configuration



## ORDERING INFORMATION

**DBC**

Dubilier  
Connectors

**MD**

Mini Din  
Connector

**0508**

Series  
0508 = Unshielded  
0508A = Half shielded  
0509 = Fully shielded

**-4**

N° of Ways

## AUDIO

SECTION 6

- 4, 6 and 8 way available
- Competitively priced
- Industry Compatible
- PCB Mounting

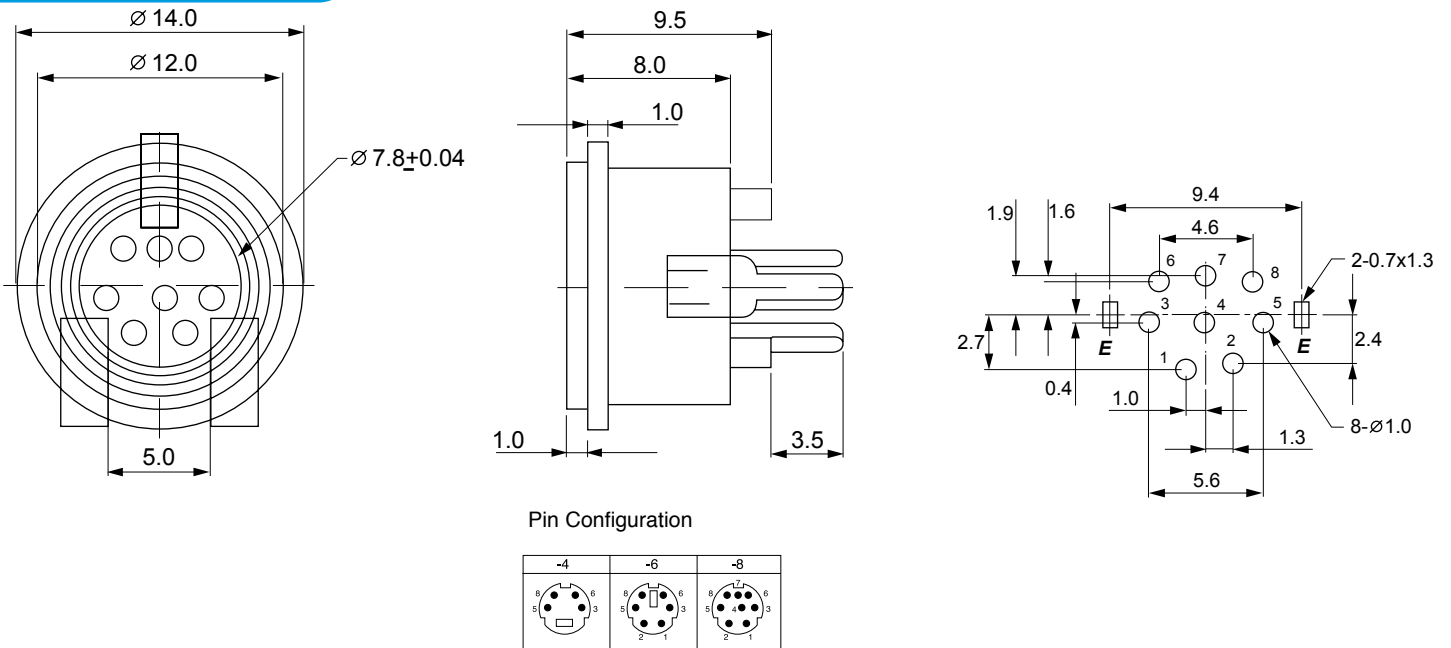
## PCB MINI DIN SOCKETS



## SPECIFICATION

<b>Contact resistance:</b>	30mΩ max. (INITIAL)
<b>Insulation resistance:</b>	100mΩ min. AT 500V DC
<b>Withstanding Voltage:</b>	500V AC for one minute
<b>Soldering heat:</b>	260±5°C for 5±1 seconds
<b>Insertion Force:</b>	0.5-4.5 KG
<b>Extraction Force:</b>	0.4-3.5 KG
<b>Lifetime:</b>	5,000 cycles min

## OUTLINE DRAWING



## ORDERING INFORMATION

<b>DBC</b>	<b>MD</b>	<b>0510</b>	<b>8</b>
Dubilier Connectors	Mini Din Connector	Series	No. of Ways
			4=4way
			6=6way
			8=8way

## AUDIO

- 3 - 9 way available
- Competitively priced
- Industry compatible
- Mates with DBCMD0508, 0508A & 0509 series
- Cable mounted
- Machined Pin

## DIN PLUGS



## SPECIFICATION

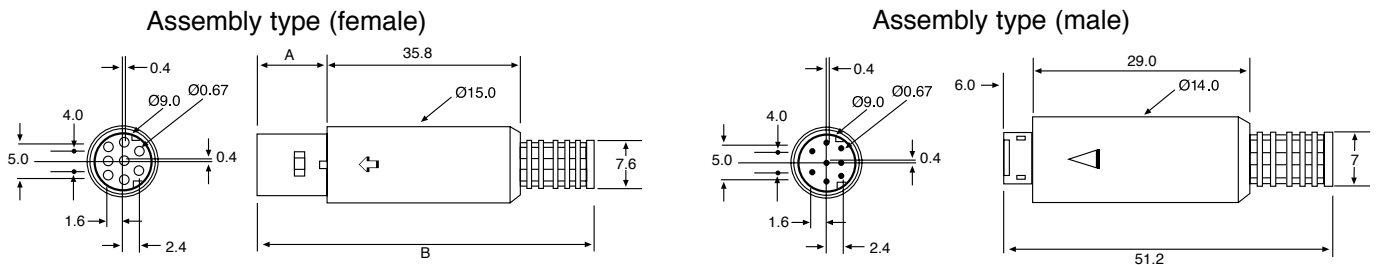
### Material & Finish

<b>Insulator:</b>	PBT Glass filled UL94V-0
<b>Cover:</b>	PVC
<b>Contact:</b>	Copper Alloy
<b>Shell:</b>	Steel
<b>Plating:</b>	Contact <ul style="list-style-type: none"> <li>1. Tin Plated (Complete)</li> <li>2. Gold Flash (Complete)</li> <li>3. Selective Gold over Nickel Plated (Contact Area), tin/lead over Nickel Plated (Tail area)</li> </ul> Shell Nickel Plated

### Electrical Characteristics

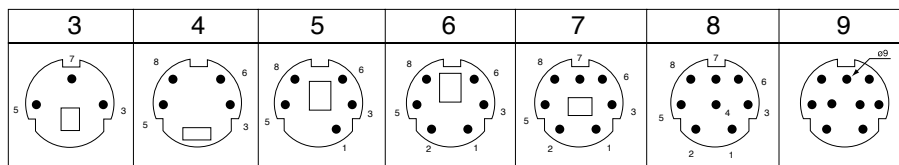
<b>Rating Current:</b>	1 Amp
<b>Contact Resistance:</b>	<15 mΩ
<b>Insulation Resistance:</b>	>1000MΩ at 500v
<b>Dielectric Voltage:</b>	500v at 1 minute
<b>Operating Temperature:</b>	-55°C to +105°C

## OUTLINE DRAWING



Pins	A	B
3	20.50	72.00
4	19.30	71.00
5	12.00	63.50
6	12.50	64.00
7	12.00	63.50
8	15.80	67.50

### Pins



## ORDERING INFORMATION

DBC	MD	11	M	4	T
Dubilier Connectors	Mini Din Connector	Series	Contact Type	No of Ways	Plating Options
			M = Male (plug) F = Female (socket)	3 = 3 Ways 4 = 4 Ways etc...	T = Tin (Std) G = Gold Flash S = Selective