

**FEMALE HEADERS**

**FEMALE HEADER SIDE ENTRY - 4.2mm PROFILE**

- Industry compatible
- Competitively priced
- Dual Row
- No. of contacts 02-80
- Gold plated contacts
- 2.00mm pitch



SECTION 8

**SPECIFICATION**

**Material & Finish**

**Contact Material:** Phosphor Bronze

**Insulator Material:** PBT & Glass-Fibre Reinforced UL-94V-0

**Current Rating:** 1 A DC

**Contact Resistance:** 30M  $\Omega$  Max

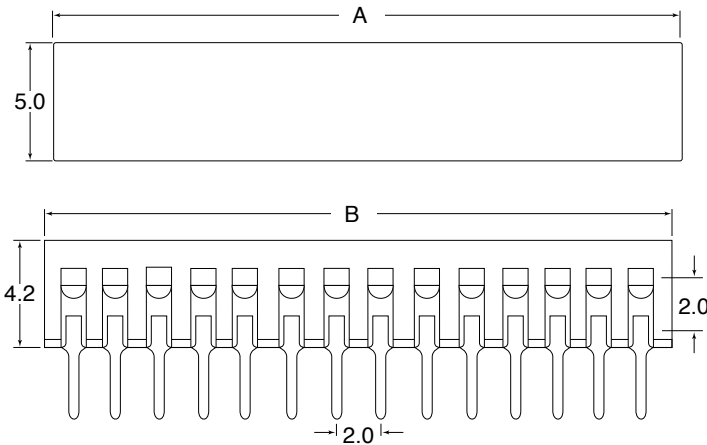
**Insulator Resistance:** 3000M  $\Omega$  Min

**Dielectric Withstanding**

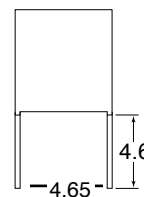
**Voltage:** 500V AC for One Minute

**Operating Temperature:** -40°C to + 105°C

**OUTLINE DRAWING**



A = 2.00mm x N° of Contacts  
 B = (2.00mm x N° of Contacts)-1



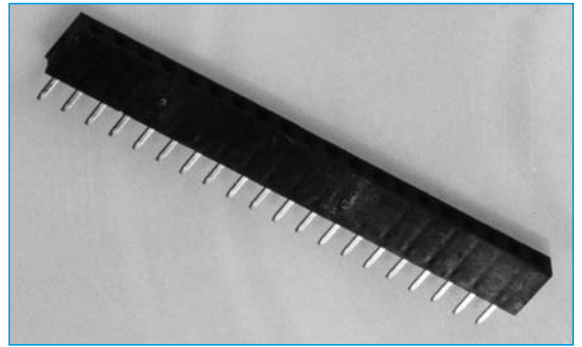
**ORDERING INFORMATION**

<b>DBC</b>	<b>IDC</b>	<b>B14</b>	<b>D</b>	<b>04</b>	<b>B</b>	<b>G</b>	<b>1</b>
Dubilier Connectors	IDC Connector	Series	N° of Rows D = Dual Row	N° of Contacts/per row 02=2way Thru to 40=40way	Contact Material B=Bronze	Contact Plating G= Gold Flash	Colour 1=Black

**FEMALE HEADERS**

**FEMALE HEADERS - 4.5mm PROFILE**

- Industry compatible
- Competitively priced
- Single or dual row
- No. of contacts 02-80
- Gold plated contacts
- 2.00mm pitch



SECTION 8

**SPECIFICATION**

**Material & Finish**

**Contact Material:** Phosphor Bronze

**Insulator Material:** PBT & Glass-Fibre Reinforced UL-94V-0

**Current Rating:** 1 A DC

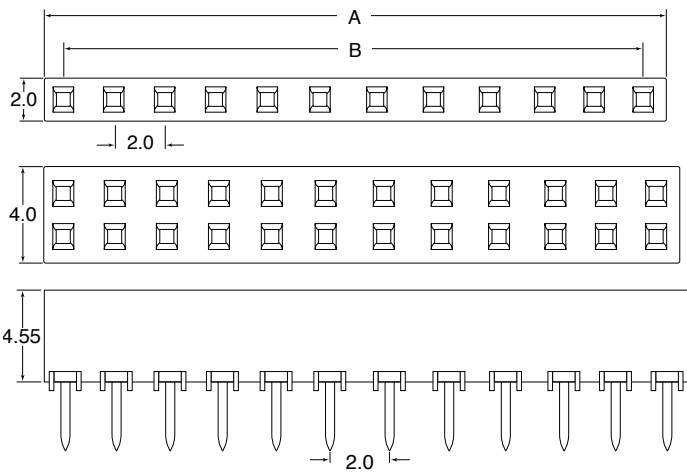
**Contact Resistance:** 30M  $\Omega$  Max

**Insulator Resistance:** 3000M  $\Omega$  Min

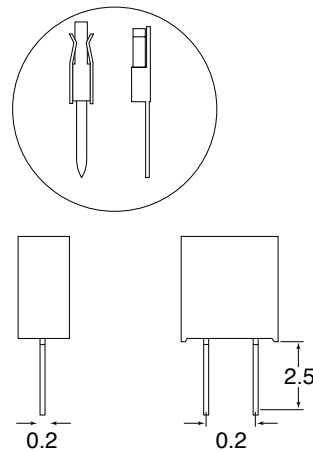
**Dielectric Withstanding Voltage:** 500V AC for One Minute

**Operating Temperature:** -40°C to + 105°C

**OUTLINE DRAWING**



A = 2.00mm x N° of Contacts  
 B = (2.00mm x N° of Contacts)-1



**ORDERING INFORMATION**

DBC	IDC	B13	S	04	B	G	1
Dubilier Connectors	IDC Connector	Series	N° of Rows	N° of Contacts/per row	Contact Material	Contact Plating	Colour
			S = Single Row D = Dual Row	02=2way Thro to 40=40way	B=Bronze	G= Gold Flash	1=Black