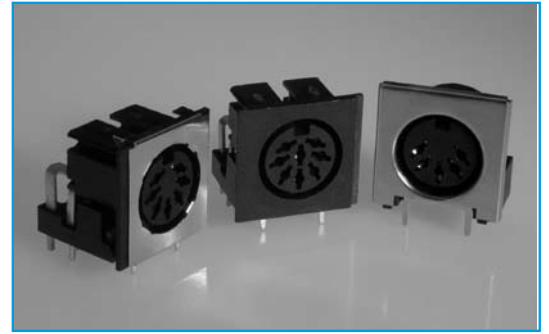


## AUDIO

## PCB DIN JACK SOCKETS

SECTION 6

- 4 - 8 way available
- Unshielded and full shielded available
- Competitively priced
- Industry Compatible
- PCB Mounting



## SPECIFICATION

### Contact resistance (DCR 0.1A)

#### 1, Initial, before any testing:

- (1) Pin to contact or (NC): 30mΩ
- (2) Plug shield to socket or (NO): 50mΩ

#### 2. After life test with mating plug:

- (1) Pin to contact or (NC): 60mΩ
- (2) Plug shield to socket or (NO): 100mΩ

#### Insertion Force:

0.5kg - 6.0kg

Terminal must withstand a 500g minimum pull for 10 seconds

#### Extraction Force:

0.5kg - 6.0kg

before movement or break from housing occurs

#### Soldering Heat:

Terminal for PC board temperature: 260 + 5 °C for 5+ 1.0 seconds

#### Operating Temperature range:

-25 °C to 100 °C

#### Insulating Resistance:

More than 100MΩ by 500v DC at 90-95% RH, 40 °C

#### Voltage Test:

Withstand 0.5mA 500v AC between any open terminal for one minute

#### Lifetime:

Withstand more than 5000 cycle's insertion and withdrawal with testing plug

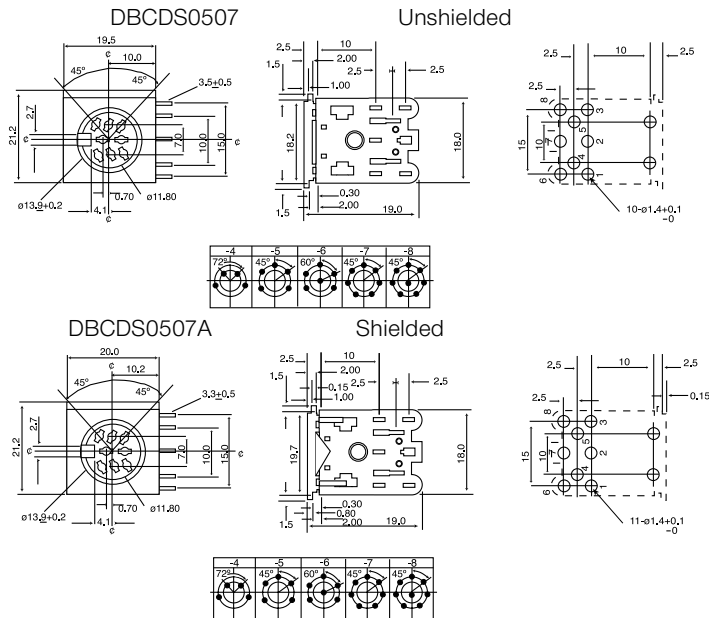
#### Rated Voltage:

16vdc

#### Rated Current:

20mA - 0.3A

## OUTLINE DRAWING



## ORDERING INFORMATION

**DBC**

Dubilier  
Connectors

**DS**

Din Socket

**0507**

Series

0507 = Unshielded  
0507A = Shielded

**-4**

N° of Ways