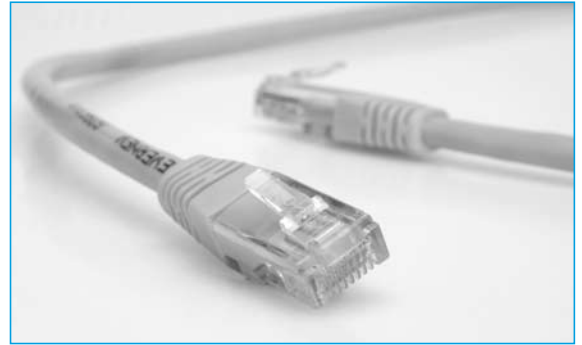


**CABLE ASSEMBLIES**

- UTP version
- Moulded shock reliefs
- 50µ" gold plating in contacts

**CAT5E MOULDED PATCH LEADS**

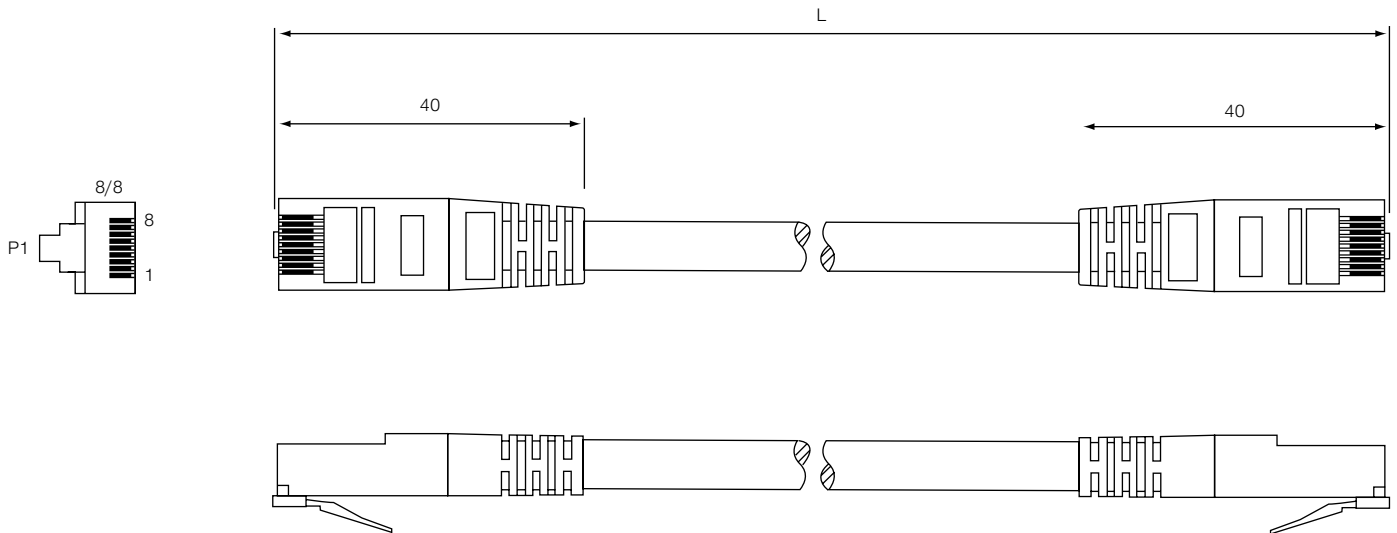


SECTION 9

**SPECIFICATION**

Cat. 5E approved to ISO/IEC DIS11801  
 Colour Options:- Grey, Black, Green, Yellow, Red and Blue  
 Cable: 4 Twisted par Cat. 5E 24 AWG - Outer Diameter 5.7mm

**OUTLINE DRAWING**



**ORDERING INFORMATION**

DBC	5EPL	B	3M
Dubilier Connectors	5E Patch Lead	Colour	Cable Length
		B = Blue	0.5M = 0,5 metres
		G = Green	1M = 1 metre
		GY = Grey	2M = 2 metres
		R = Red	3M = 3 metres
		Y = Yellow	5M = 5 metres
		BK = Black	10M = 10metres